


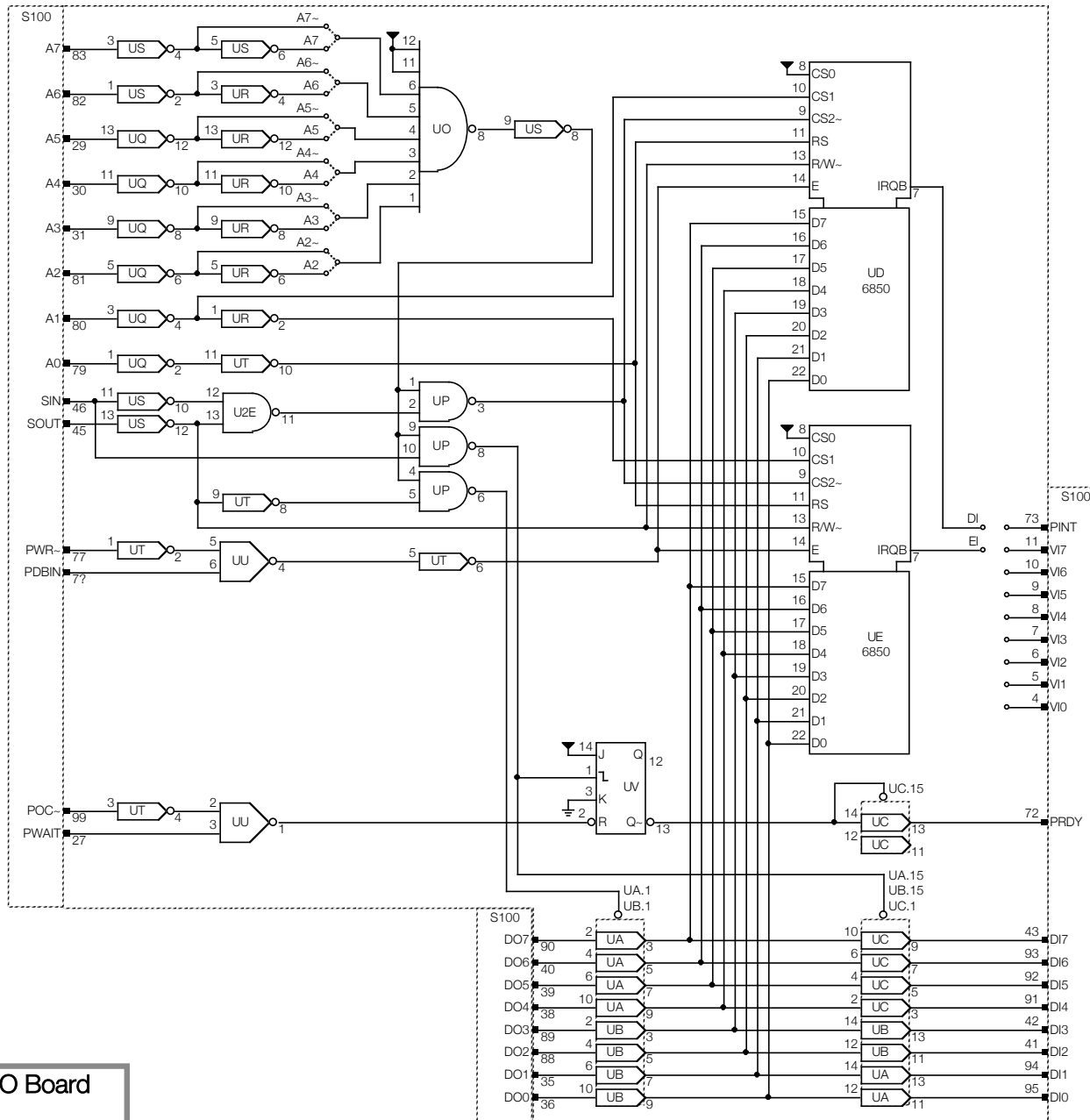
**MIT S
88-2SIO**

S100 Serial IO Board

Schematic

NOTES

- The symbol  represents a connector pin. The solid black end is the male side, the white-filled end is the female side.
Connector pins are identified by a label of the form:
N <connector> . <pin>
- A small black marker on the upper half of a gate symbol indicates an open-collector output.
- Based on observation of board.
- 2022 Dec: This drawing / bhilpert.

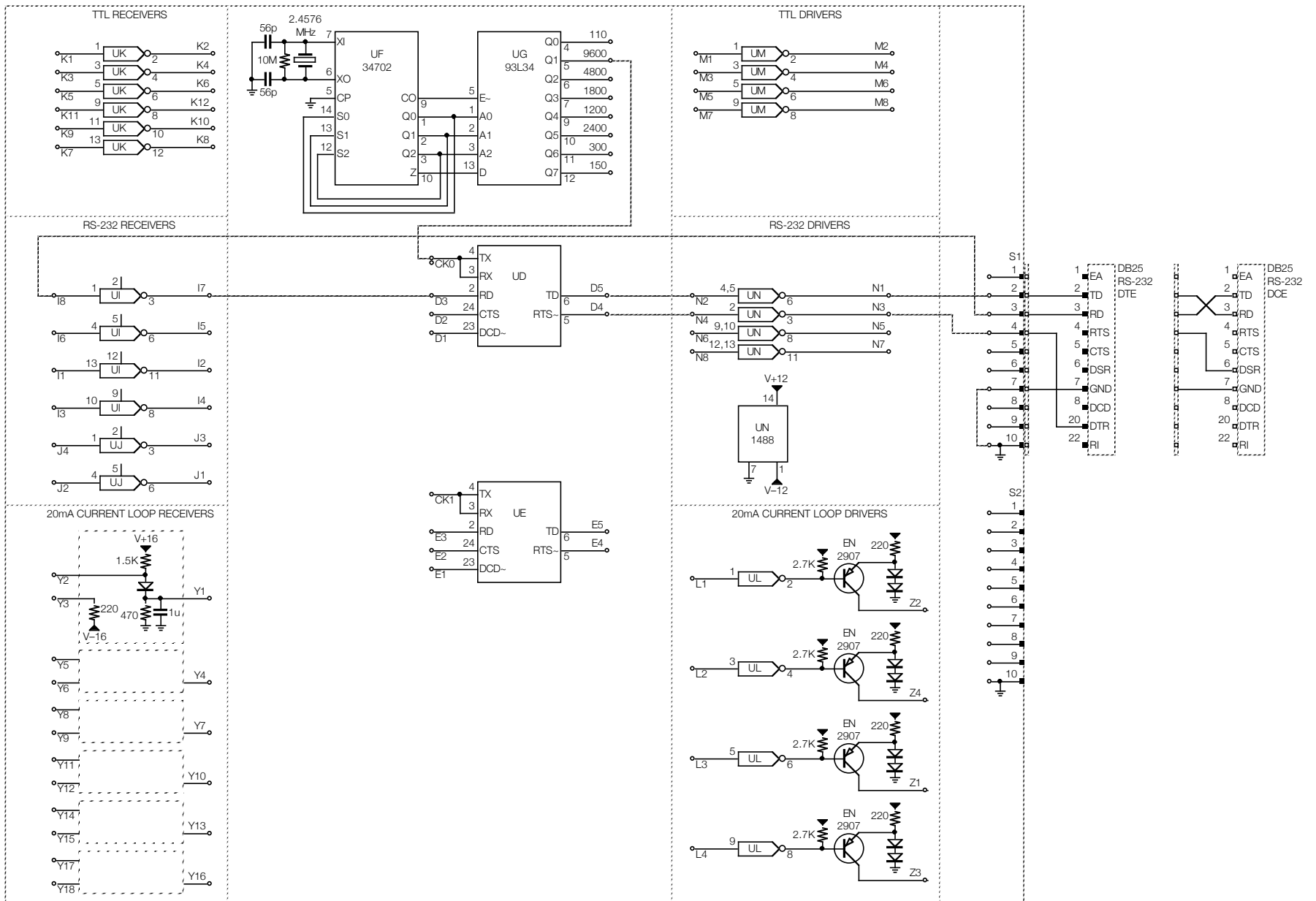


MITS 88-2SIO S100 Serial IO Board

Section: Bus

Page: 2

Rendition: 2023 Apr 5



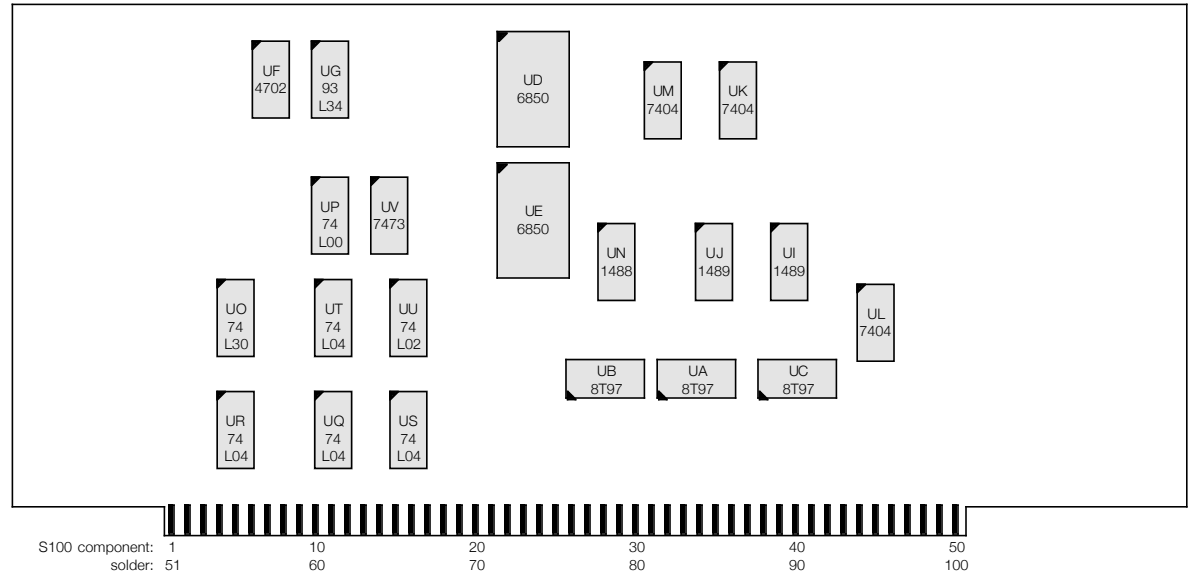
MITS 88-2SIO S100 Serial IO Board

Section: Communications Interface

Page: 3

Rendition: 2023 Apr 5

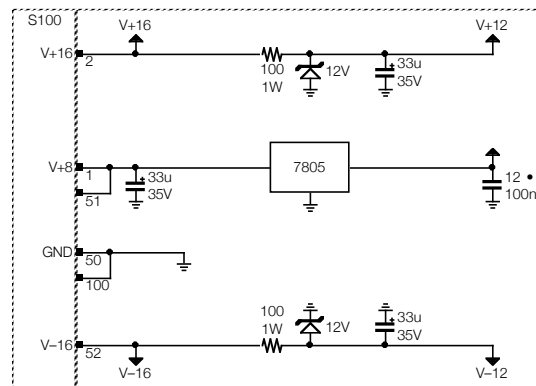
Ux	Type	a	b	c	d	e	f
A	8T97	√	√	√	√	√	√
B	8T97	√	√	√	√	√	√
C	8T97	√	√	√	√	u	√
D	6850	√					
E	6850	√					
F	4702	√					
G	93L34	√					
H	-						
I	1489	√	√	√	√		
J	1489	√	√	u	u		
K	7404	√	√	√	√	√	√
L	7404	√	√	√	√	u	u
M	7404	√	√	√	√	u	u
N	1488	√	√	√	√		
O	74L30	√					
P	74L00	√	√	√	u		
Q	74L04	√	√	√	√	√	√
R	74L04	√	√	√	√	√	√
S	74L04	√	√	√	√	√	√
T	74L04	√	√	√	√	√	u
U	74L02	√	√	u	u		
V	7473	√	u				



Total ICs: 21

Type	Qty	Pins	V+5	GND
4702	1	16	16	8
6850	2	24	12	1
74L00	1	14	14	7
74L02	1	14	14	7
7404	3	14	14	7
74L04	4	14	14	7
74L30	1	14	14	7
7473	1	14	14	7
93L34	1	16	16	8
1488	1	14	-	7
1489	2	14	14	7
8T97	3	16	16	8

Total: 21



MIT S 88-2SIO S100 Serial IO Board

Section: Layout & IC Types

Page: 4

Rendition: 2023 Apr 5