

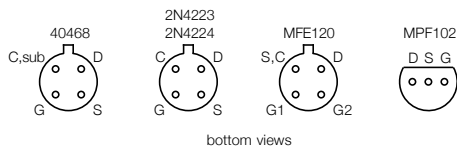
Notes

• This is the reverse-engineered schematic of a Hammarlund SP-600 which had been converted to solid-state. This schematic represents the unit as received, several aspects are not functional or do not make sense:

- QC3 has an open input,
- QC4 has no supply,
- QC10 in the AVC is reverse biased. Most of the AVC amp appears non-functional and pointless,
- two zener regs on the BFO,
- no bias on QV13,
- 0.01 filter cap on AM audio appears excessive,
- the meter circuitry goes nowhere.

• Capacitance in microfarads unless otherwise indicated.

• 2014 Aug: Drawn / bhilpert.

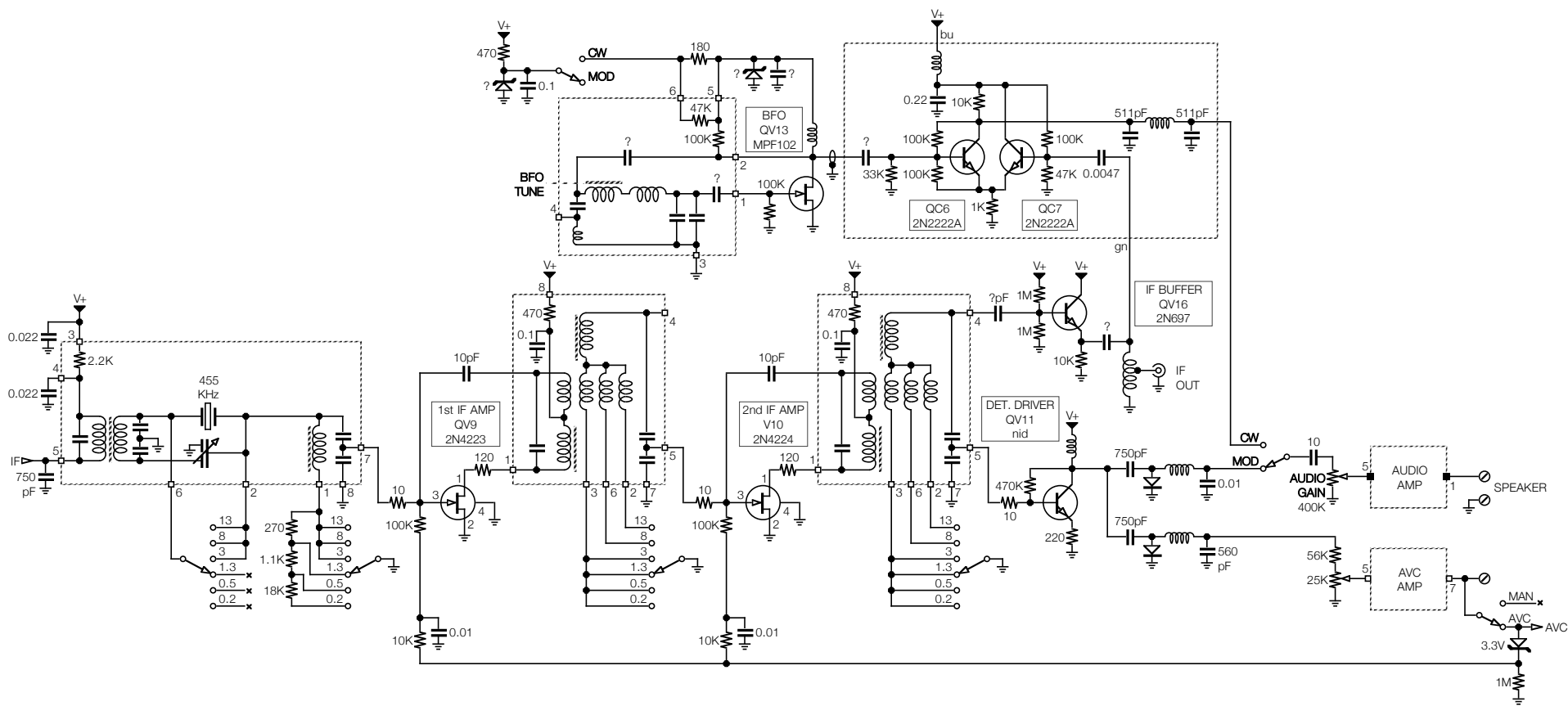


ID	Type
QV1	40468 RCA
QV2	MFE120
QV3	-
QV4	2N4224
QV5	2N4224
QV6	nid npn
QV7	nid npn
QV8	2N696
QV9	2N4223
QV10	2N4224
QV11	nid npn
QV12	-
QV13	MPF102
QV14	-
QV15	-
QV16	2N697

ID	Type
QC1	2N709
QC2	nid npn
QC3	2N709
QC4	2N4224
QC5	nid npn
QC6	2N2222A
QC7	2N2222A
QC8	2N3638
QC9	2N1103
QC10	nid npn
QC11	2N3638
QC12	2N409

ID	Type
QA1	2N1013
QA2	nid pnp
QA3	nid pnp
QA4	nid pnp
QA5	nid npn
QA6	nid pnp
QA7	2N457A
QA8	2N457A
QP1	2N2905A
QP2	2N2219A
QP3	RCA 13002
QP4	MJ3701
QP5	2N2905A
QP6	nid
QP7	nid

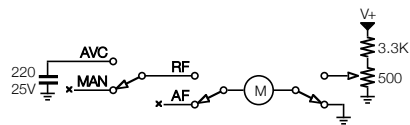
**Solid-State Hammarlund SP-600
Version 1**

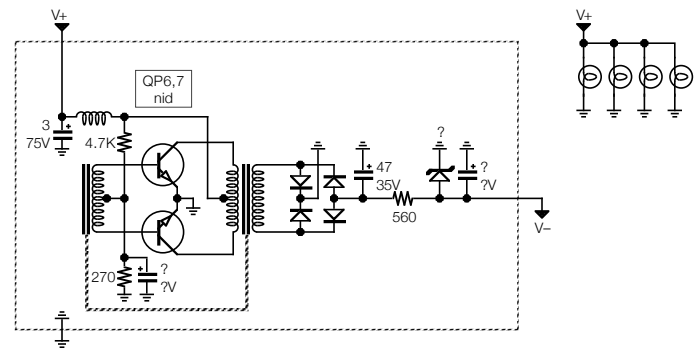
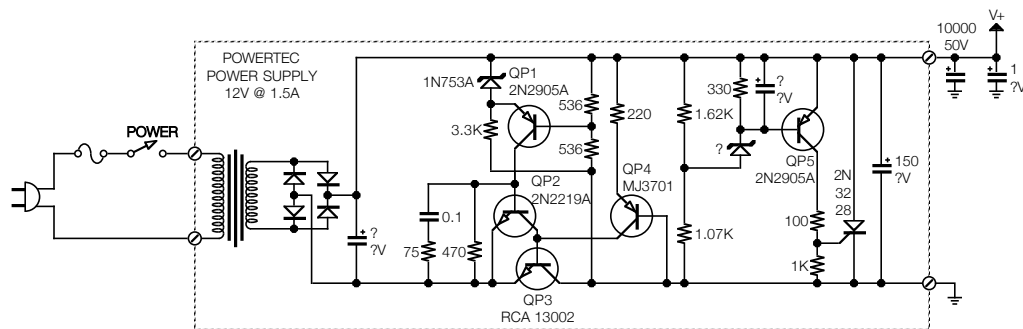
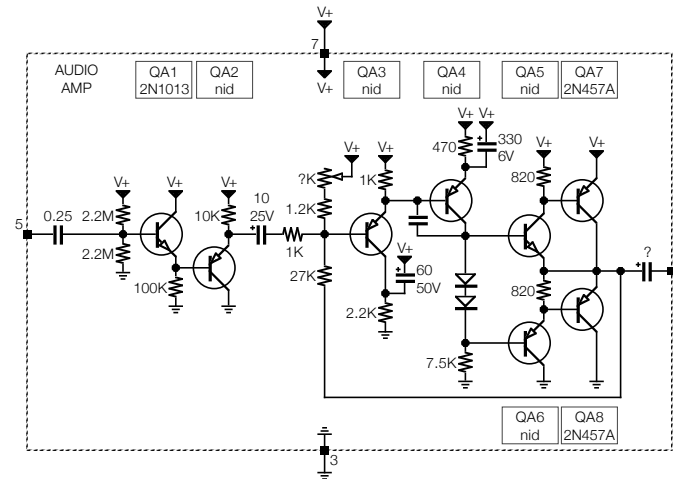
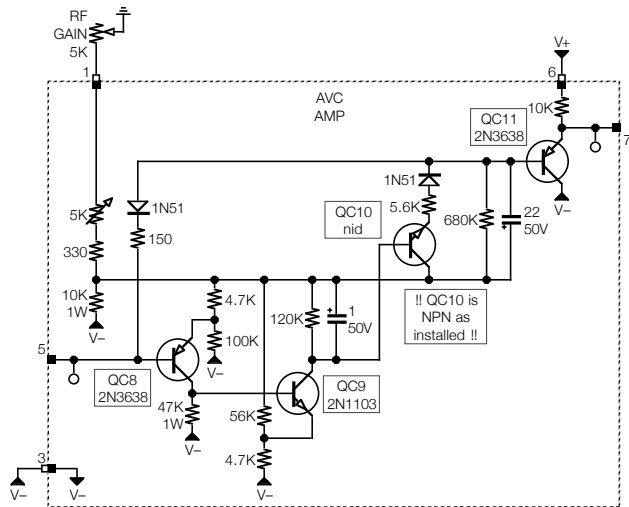


Solid-State Hammarlund SP-600
Version 1

Section: IF, Detectors
Page: 2

Rendition: 2019 May 5





**Solid-State Hammarlund SP-600
Version 1**