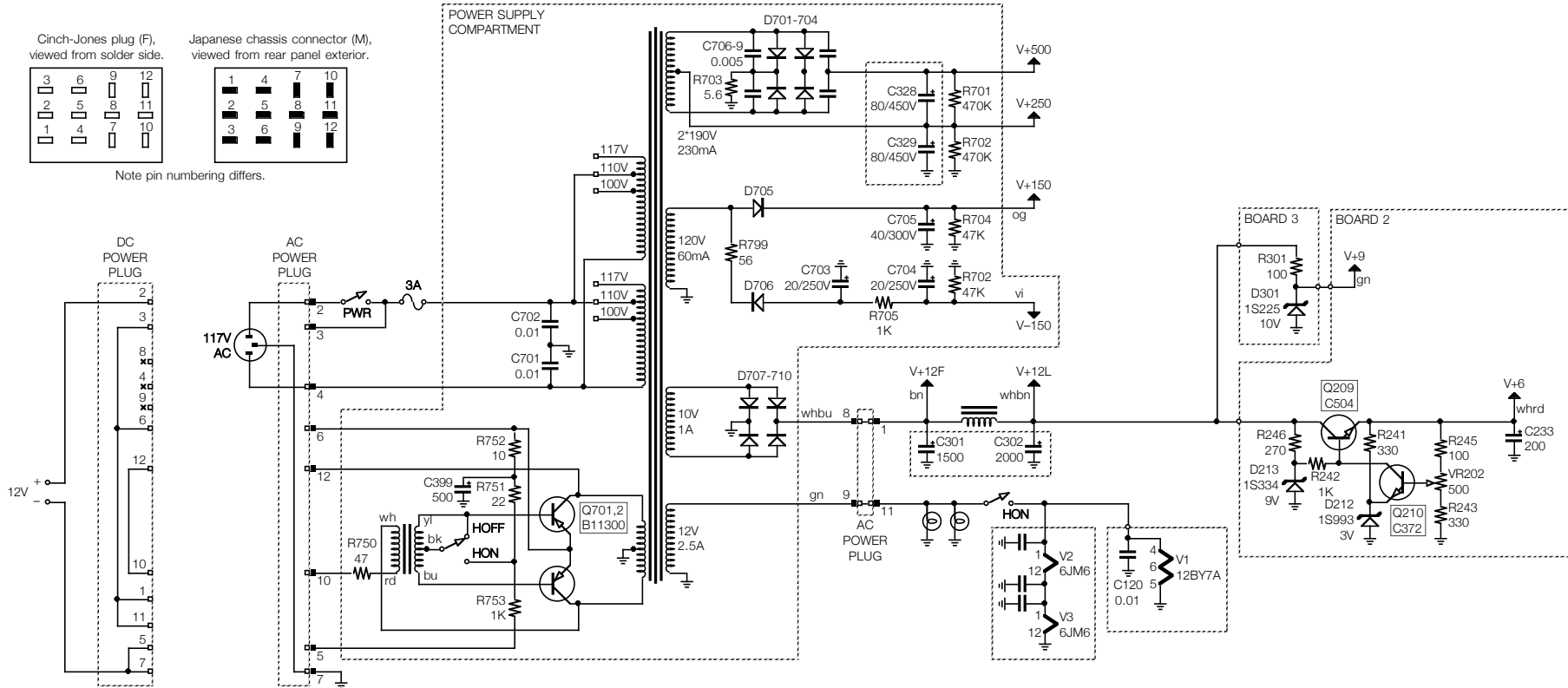


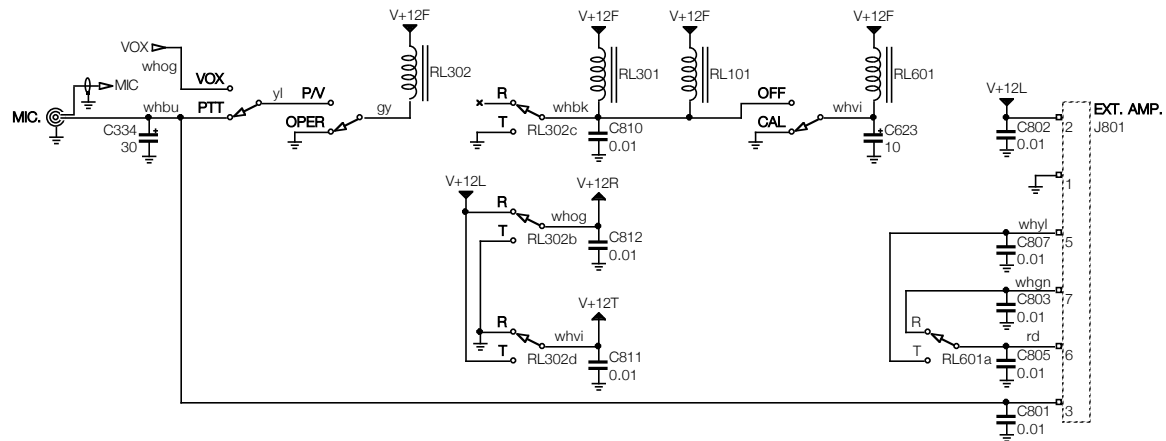
**Yaesu  
FTDX-100  
Amateur Band SSB Transceiver  
Schematic**

<b>Contents</b>	
Section	Page
Title & Contents (this page)	1
Notes, Power Supply, T/R Switching	2
HFO, VFO, Cal. Osc.	3
Receive Front End, Heterodyne Mixers	4
SB Oscillators, IF, Mod. & Demod.	5
Audio	6
Transmitter Power Amp.	7
Layout Top	8
Layout Bottom	9



**Notes**

- Section numbering:
  - 1 PCB 1 - HFO, front end, mixers, xmt driver
  - 2 PCB 2 - IF, rcv AF preamp
  - 3 PCB 3 - mixers, rcv AF amp, mic amp, cal. osc.
  - 4 VFO
  - 5 PCB - fixed-channel oscillator
  - 6 xmt power amp
  - 7 power supply
  - 8 chassis
  - 9 VOX
- Rotary switch wafers are numbered starting at 1 closest to the chassis mounting. This differs from the manufacturer schematic.
- Capacitance in microfarads unless otherwise indicated.
- Redrawing of manufacturer schematic with some corrections and differences noted from Unit 9011904.
- 2019 Dec: This drawing / bhlpert.

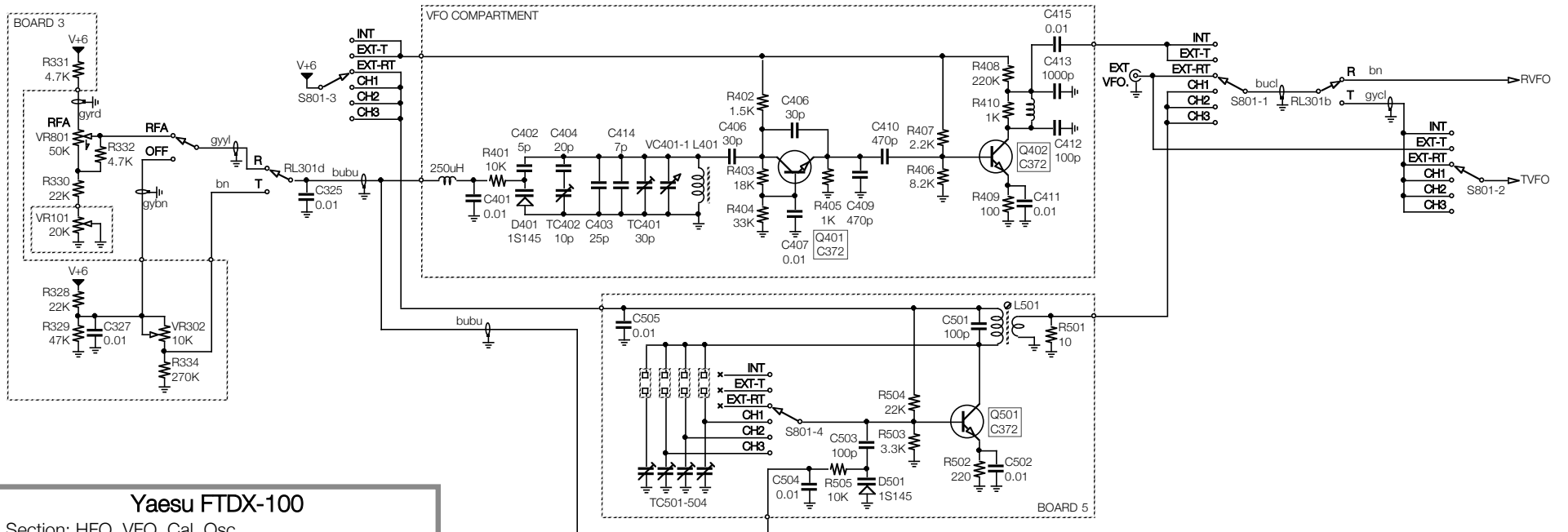
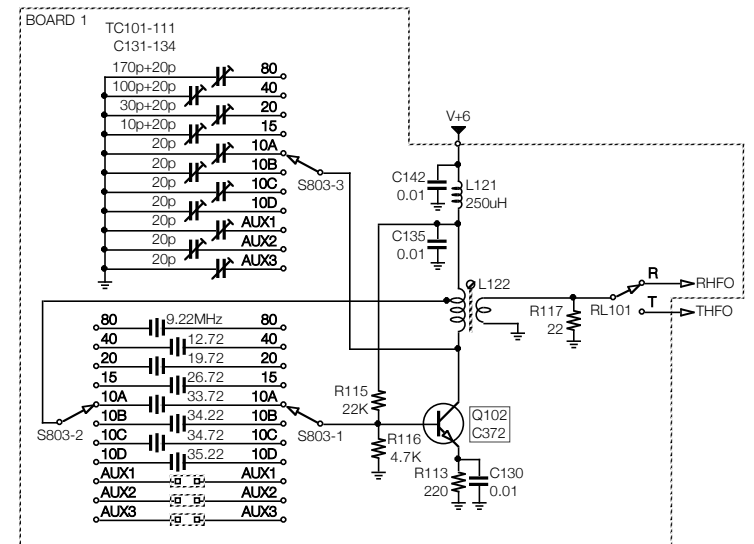
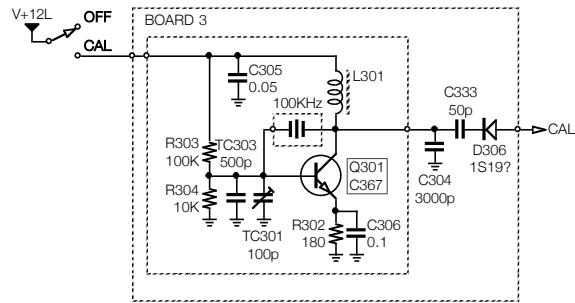


**Yaesu FTDX-100**

Section: Notes, Power & T/R Switching

Page: 2

Rendition: 2020 Jan 28

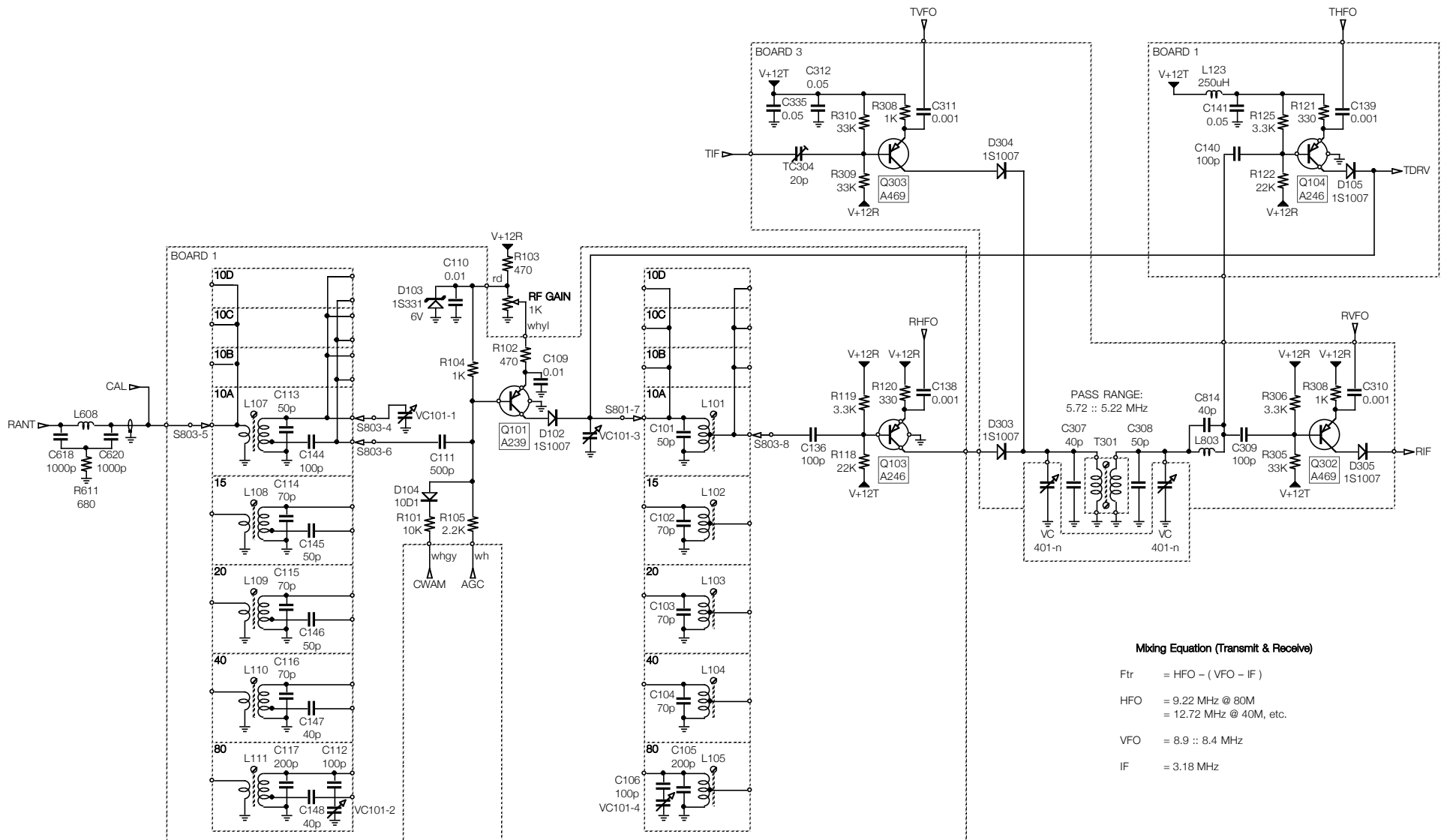


**Yaesu FTDX-100**

Section: HFO, VFO, Cal. Osc.

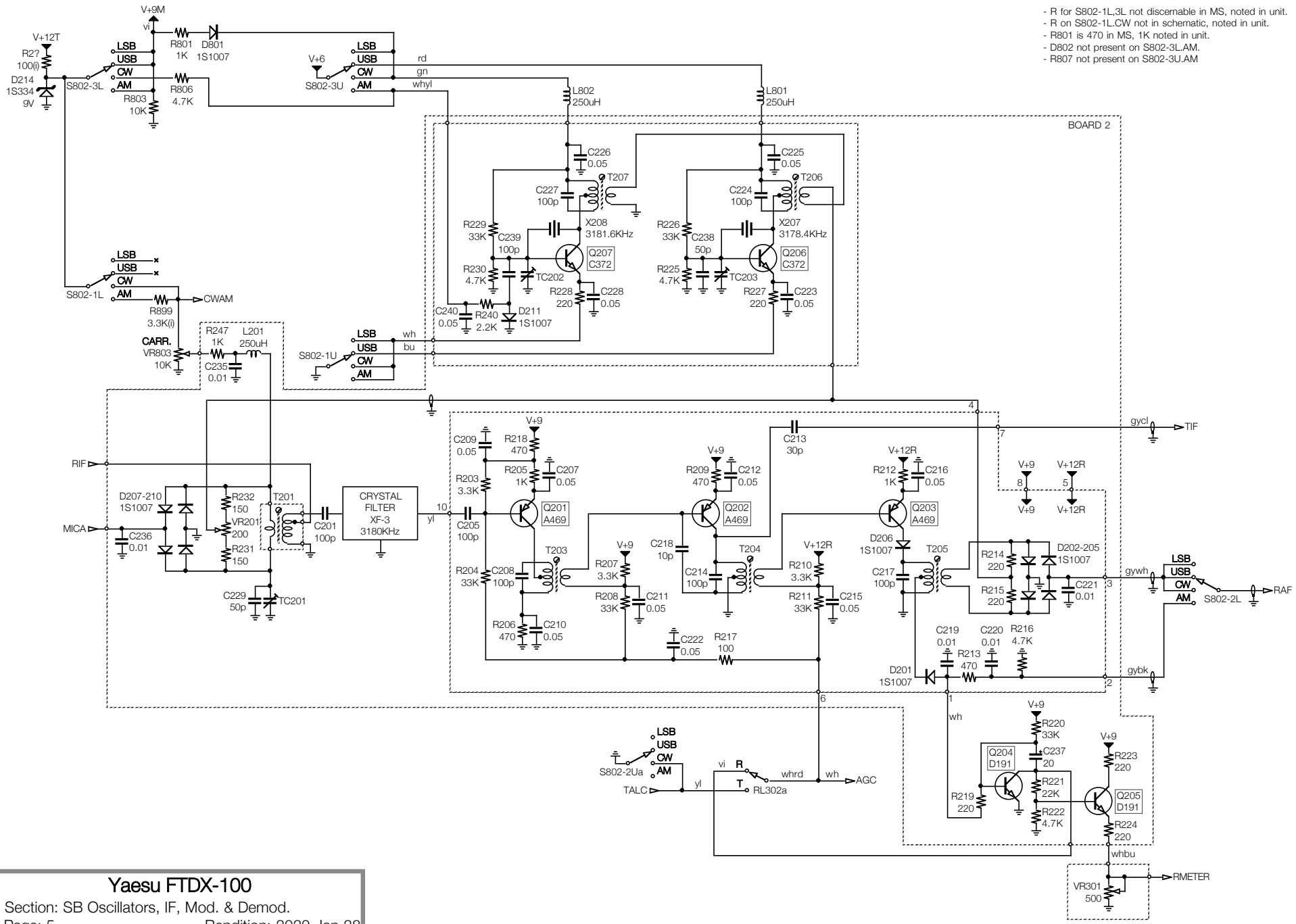
Page: 3

Rendition: 2020 Jan 28

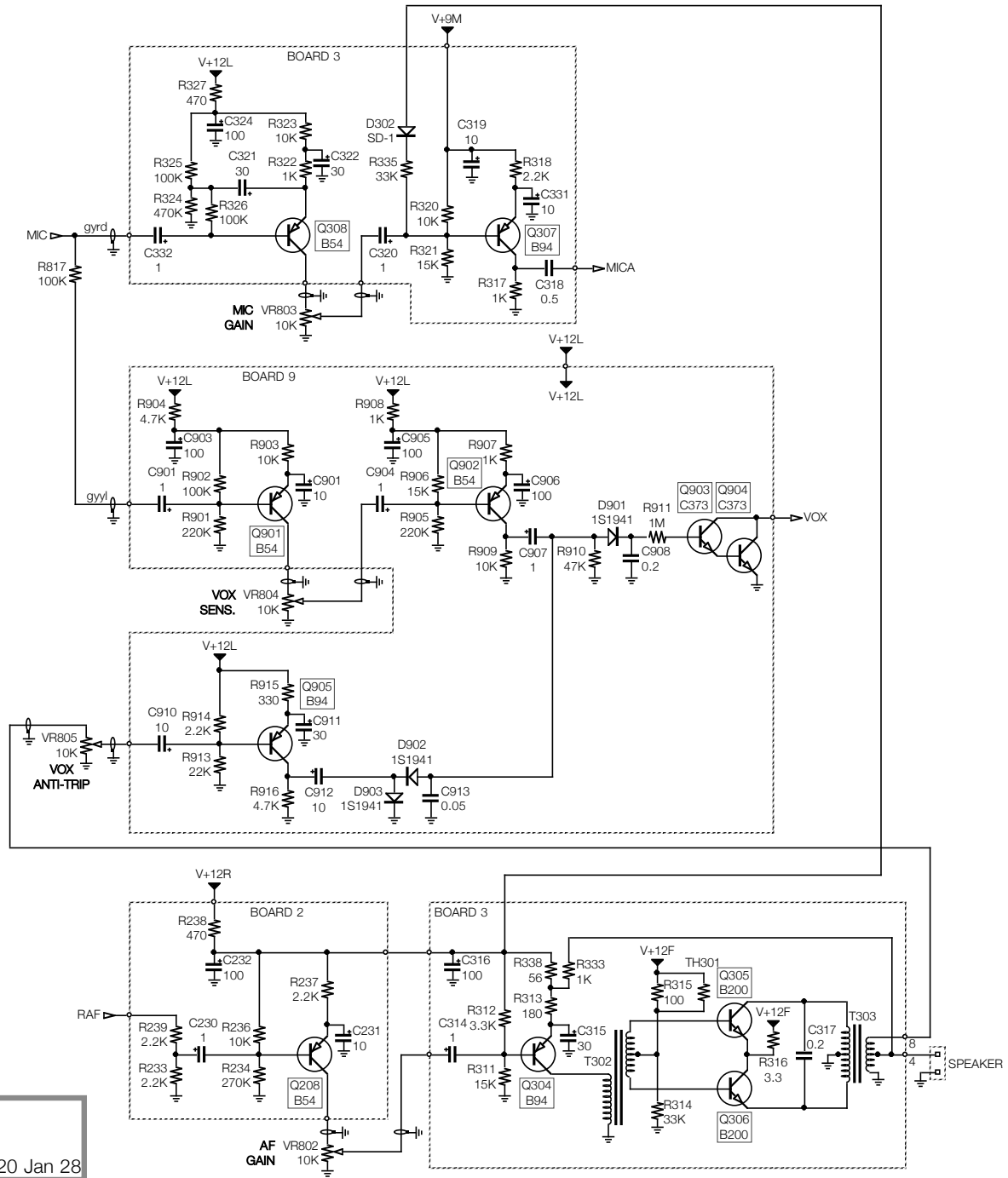


**Mixing Equation (Transmit & Receive)**

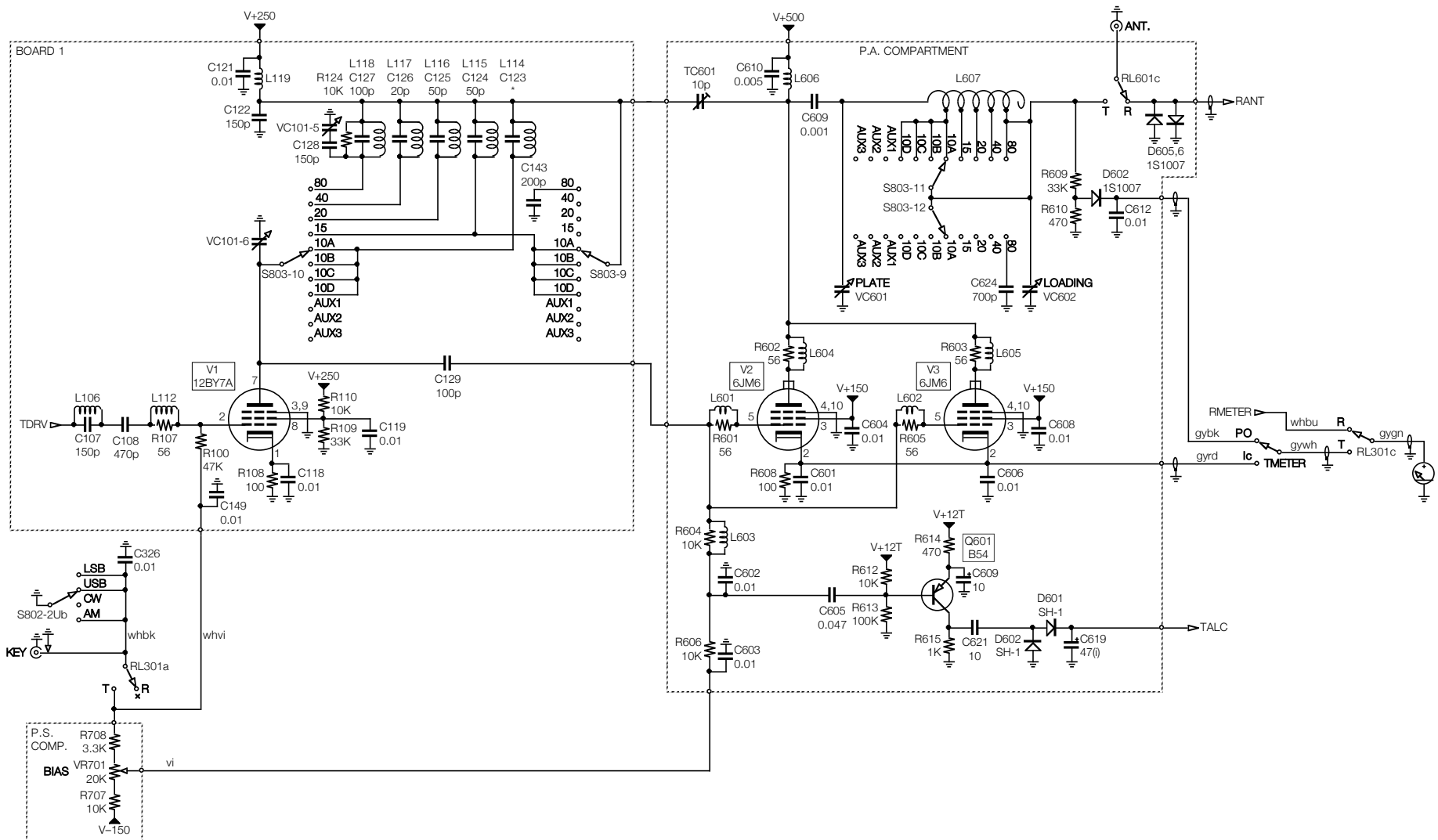
- Ftr = HFO - (VFO - IF)
- HFO = 9.22 MHz @ 80M  
= 12.72 MHz @ 40M, etc.
- VFO = 8.9 :: 8.4 MHz
- IF = 3.18 MHz



- R for S802-1L,3L not discernable in MS, noted in unit.
- R on S802-1L,CW not in schematic, noted in unit.
- R801 is 470 in MS, 1K noted in unit.
- D802 not present on S802-3L,AM.
- R807 not present on S802-3U,AM



Yaesu FTDX-100



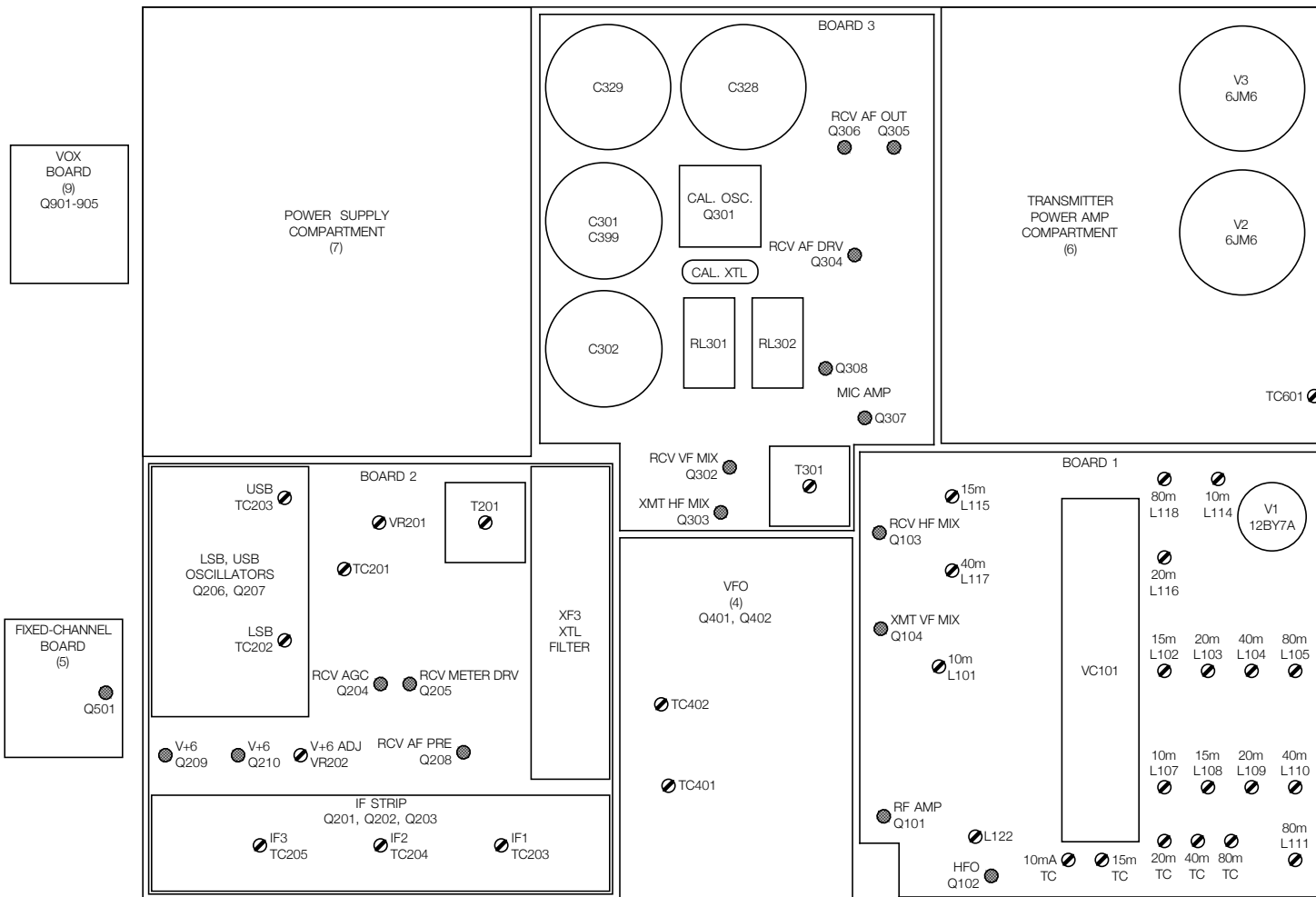
## Yaesu FTDX-100

Section: Transmit Power Amp.

Page: 7

Rendition: 2020 Jan 28

TOP VIEW



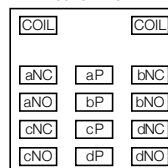
Yaesu FTDX-100



BOTTOM VIEW



RL301,302  
bottom view



Yaesu FTDX-100